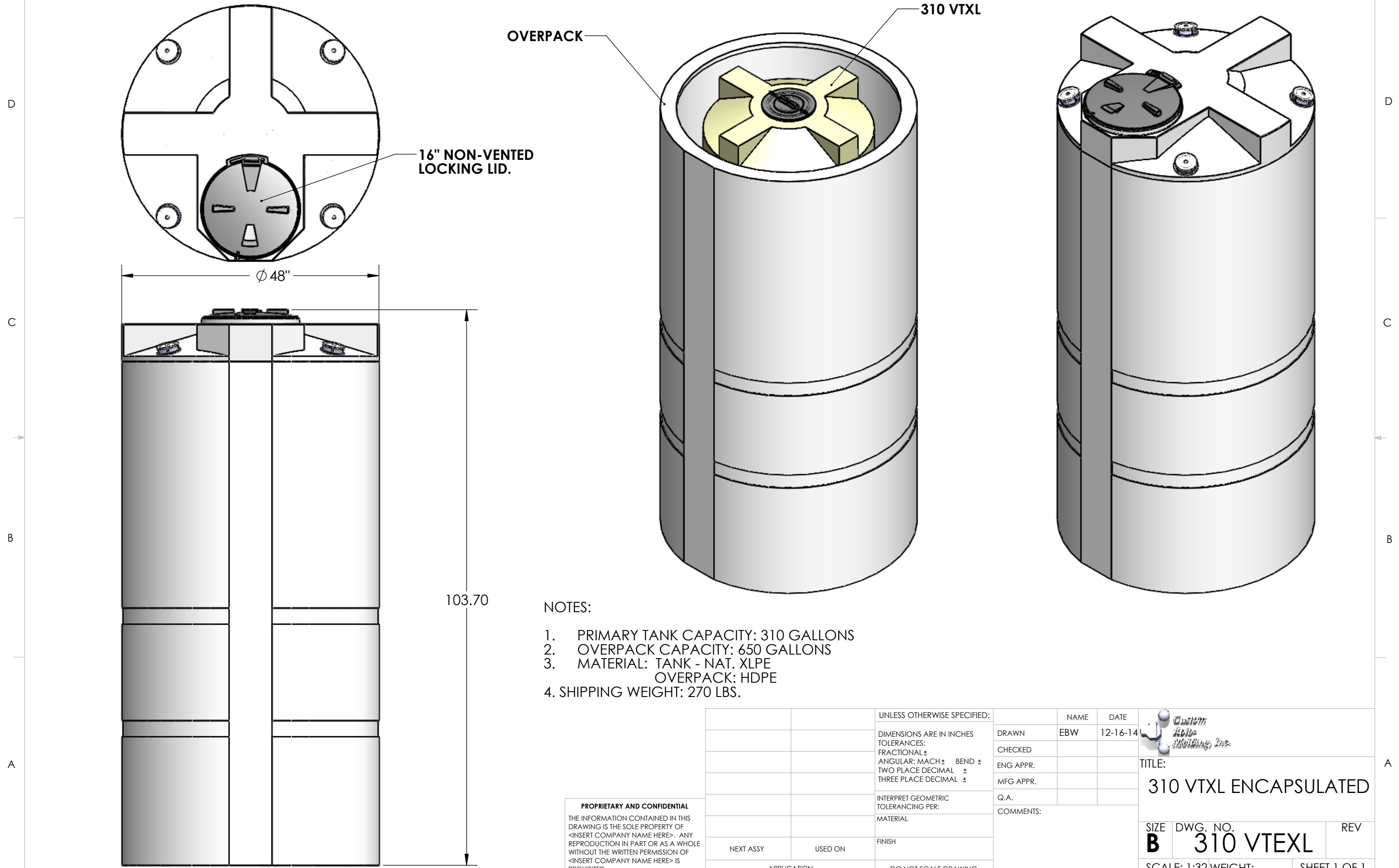


8 7 6 5 4 3 2 1



16" NON-VENTED LOCKING LID.

OVERPACK

310 VTXL

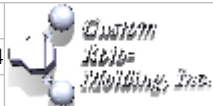
Ø 48"

103.70

NOTES:

1. PRIMARY TANK CAPACITY: 310 GALLONS
2. OVERPACK CAPACITY: 650 GALLONS
3. MATERIAL: TANK - NAT. XLPE
OVERPACK: HDPE
4. SHIPPING WEIGHT: 270 LBS.

PROPRIETARY AND CONFIDENTIAL
THE INFORMATION CONTAINED IN THIS DRAWING IS THE SOLE PROPERTY OF <INSERT COMPANY NAME HERE>. ANY REPRODUCTION IN PART OR AS A WHOLE WITHOUT THE WRITTEN PERMISSION OF <INSERT COMPANY NAME HERE> IS PROHIBITED.

		UNLESS OTHERWISE SPECIFIED:		NAME	DATE
		DIMENSIONS ARE IN INCHES		DRAWN	EBW
		TOLERANCES:		CHECKED	
		FRACTIONAL ±		ENG APPR.	
		ANGULAR: MACH ± BEND ±		MFG APPR.	
		TWO PLACE DECIMAL ±		Q.A.	
		THREE PLACE DECIMAL ±		COMMENTS:	
		INTERPRET GEOMETRIC TOLERANCING PER:		 <p>TITLE: 310 VTXL ENCAPSULATED</p>	
		MATERIAL			
NEXT ASSY	USED ON	FINISH		SIZE	DWG. NO.
APPLICATION		DO NOT SCALE DRAWING		B	310 VTEXL
				SCALE: 1:32	WEIGHT:
				SHEET 1 OF 1	

8 7 6 5 4 3 2 1