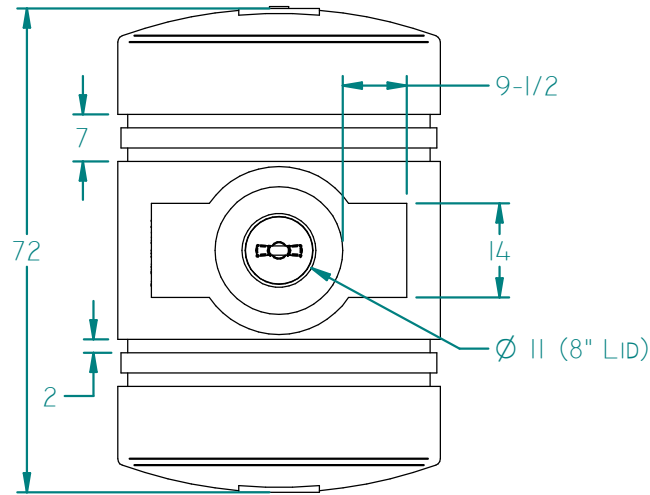
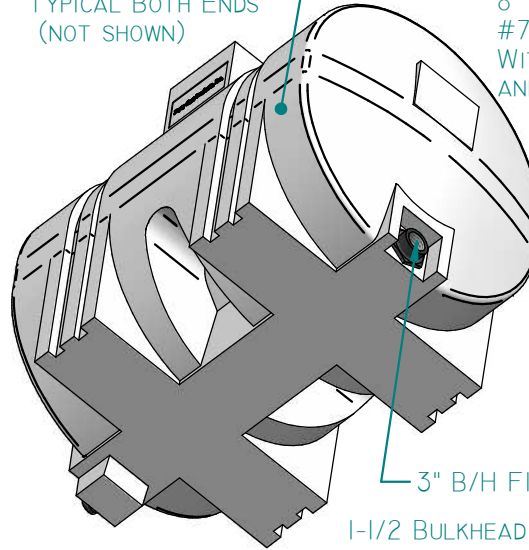


REVISION HISTORY

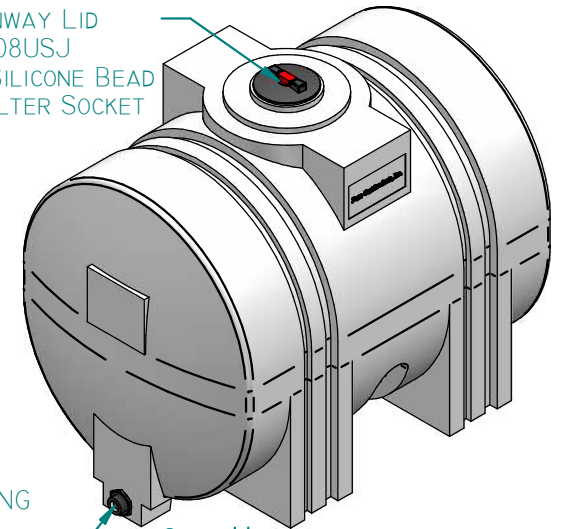
REV	DESCRIPTION	DATE	APPROVED	Revised By
10	PRODUCT RELEASE	12/17/13		



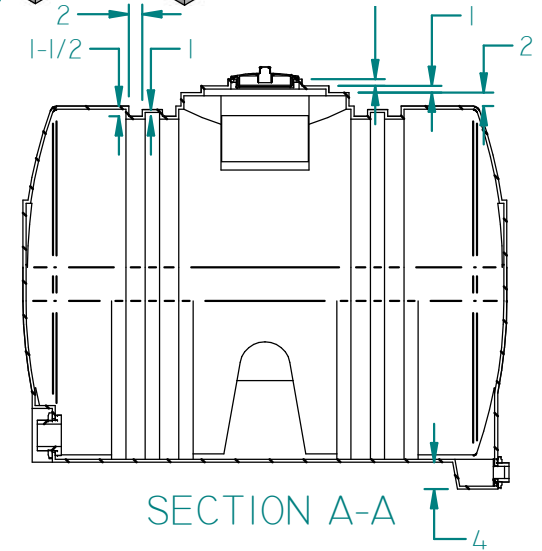
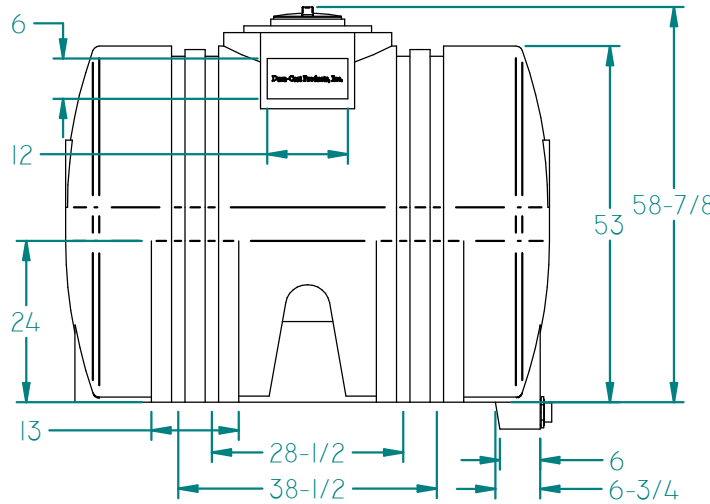
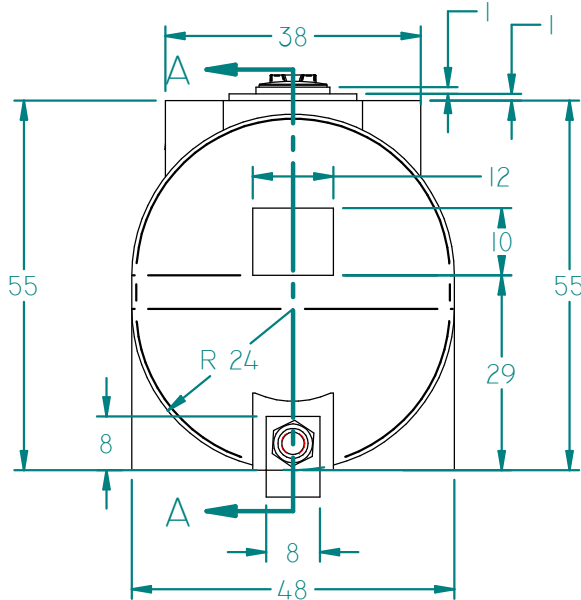
GALLONS CALIBRATION  
25 GAL INTERVALS  
TYPICAL BOTH ENDS  
(NOT SHOWN)




8" MANWAY LID  
#751008USJ  
WITH SILICONE BEAD  
AND FILTER SOCKET



3" B/H FITTING  
1-1/2" BULKHEAD FITTING



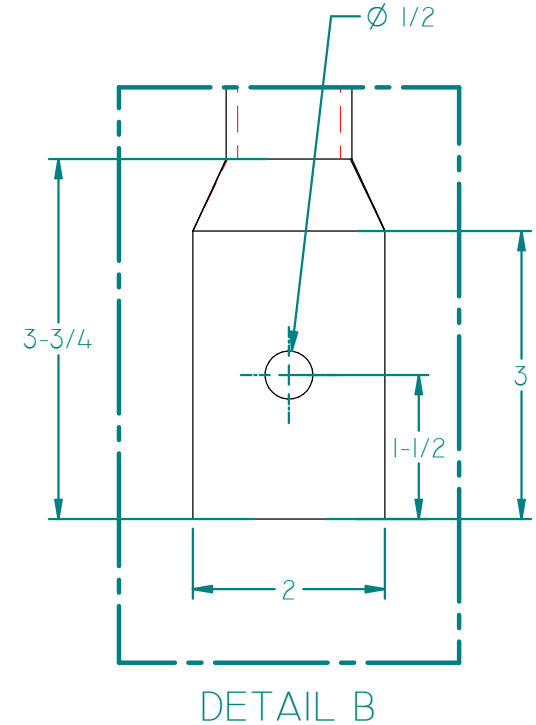
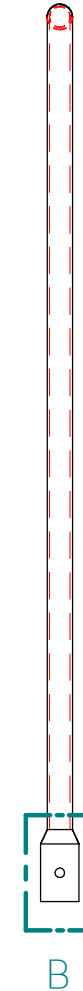
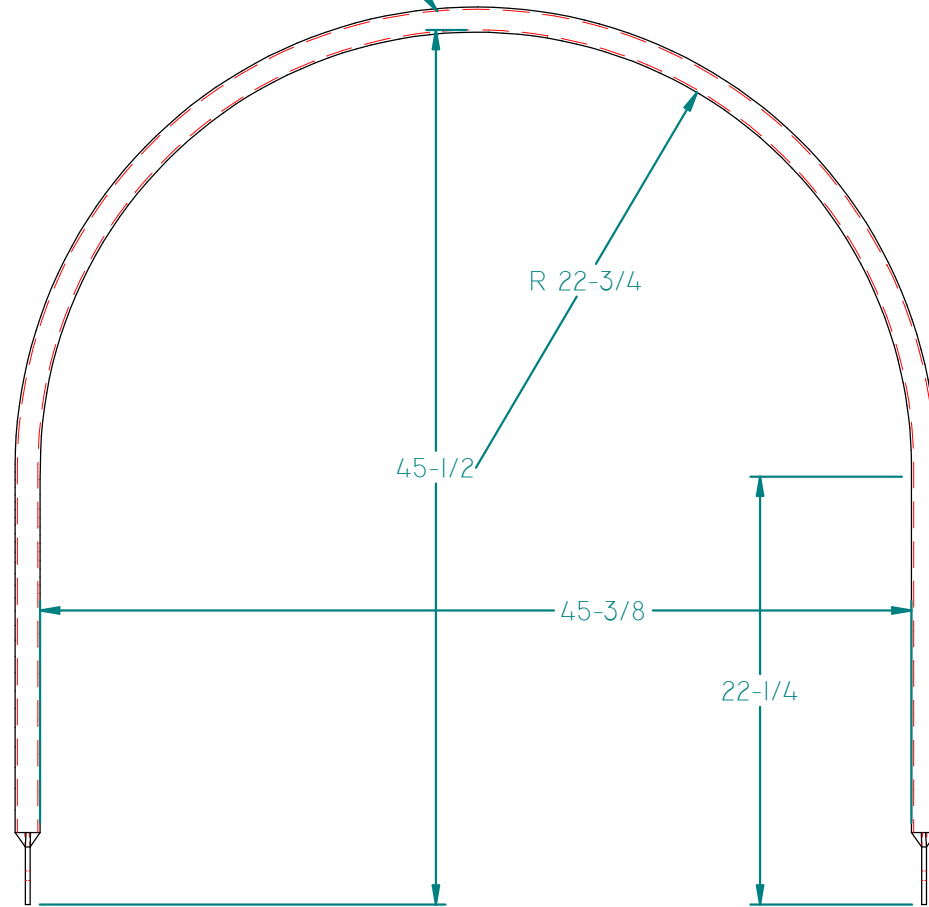
NOTE: TANK MUST BE INSTALLED WITH HOLD DOWN TUBING SUPPORTS OR EQUIVALENT IN ORDER TO MEET WARRANTY REQUIREMENTS.

Weight: 279 lbm	NAME	DATE	 16160 Hwy 27 Lake Wales, FL. 33859	
Minimum Wall Thickness: 0.375 in	DRAWN By: scloud	6/22/2016		
Customer Part No: N/A	Customer APPR		Customer: Dura-Cast Products, inc.	
Print Date: 6/22/2018	MFG APPR		Part Title: 550 Gal Leg Tank	
Comments:	Tolerance: UNLESS OTHERWISE SPECIFIED DIMENSIONS ARE IN INCHES ±1% Std Radii 3/16"	File Name: 550 Gal Leg Tank 10 - Duracast.dft		
		Size: A	Material: HDPE 942	Rev: 10
		Part No: 920550-AI200US1	Do Not Scale	Sheet: 1 OF 2


REVISION HISTORY

REV	DESCRIPTION	DATE	APPROVED	Revised By
10	PRODUCT RELEASE	12/17/13		

1" RIGID GALVANIZED PIPE  
1.31" O.D. W/ 0.120" WALL



REQUIRES: - (2EA) 3/8-16 x 10" "J" HOOK S.S.  
- (2EA) 3/8-16 THREADED NUT S.S.  
- (2EA) 3/8 x 1-1/2" FENDER WASHER S.S.

Weight: 279 lbm		NAME	DATE	 <p>16160 Hwy 27 Lake Wales, FL. 33859</p>
Minimum Wall Thickness: 0.375 in	DRAWN By: scloud	6/22/2016		
Customer Part No: N/A	Customer APPR			Customer: Dura-Cast Products, inc.
Print Date: 6/22/2018	MFG APPR			Part Title: 550 Gal Leg Tank
Comments:	Tolerance: UNLESS OTHERWISE SPECIFIED DIMENSIONS ARE IN INCHES ±1% Std Radii 3/16"			File Name: 550 Gal Leg Tank 10 - Duracast.dft
				Size: A Material: HDPE 942 Rev: 10
				Part No: 920550-AI200US1 Do Not Scale Sheet: 2 OF 2